



From mechanical to chemical impact of anchoring in seagrasses: The premises of anthropogenic patch generation in *Posidonia oceanica* meadows



Arnaud Abadie^{a,b,c,*}, Pierre Lejeune^a, Gérard Pergent^c, Sylvie Gobert^b

^a Station de Recherches Sous-marines et Oceanographiques (STARESO), Pointe Revellata, BP 33, 20260 Calvi, France

^b Laboratory of Oceanology, MARE Centre, University of Liege, B6C, 4000 LIEGE, Sart Tilman, Belgium

^c EqEL-FRES 3041, UMR CNRS SPE 6134, University of Corsica, 20250 Corte, France

ARTICLE INFO

Article history:

Received 27 February 2016

Received in revised form 2 June 2016

Accepted 3 June 2016

Available online 9 June 2016

Keywords:

Anchoring
Conservation
Seagrass
Seascape
Patch

ABSTRACT

Intensive anchoring of leisure boats in seagrass meadows leads to mechanical damages. This anthropogenic impact creates bare mat patches that are not easily recolonized by the plant. Several tools are used to study human impacts on the structure of seagrass meadows but they are not able to assess the indirect and long term implication of mechanical destruction. We chose to investigate the possible changes in the substrate chemistry given contrasted boat impacts. Our observations show that hydrogen sulfide concentrations remain high at 15 and 20 m depth (42.6 μM and 18.8 μM) several months after the highest period of anchoring during the summer. Moreover, our multidisciplinary study reveals that anchoring impacts of large boats at 15 and 20 m depth can potentially change the seascape structure. By taking into account both structural and chemical assessments, different managing strategies must be applied for coastal areas under anthropogenic pressures.

© 2016 Elsevier Ltd. All rights reserved.

1. Introduction

Over the last decades, marine ecosystems all around the world have been facing impacts of human activities at various extents (Halpern et al. 2008; Jorda et al. 2012). This statement is particularly observed in the Mediterranean Sea at the level of the coastal habitat formed by seagrass meadows (Grech et al. 2012; Giakoumi et al. 2013). Seagrasses play a major ecological and economical role at the level of the global ocean, covering an area reaching up to 500,000 km² (Costanza et al. 1997; Short et al. 2007; Cullen-Unsworth and Unsworth 2013). Thus, they constitute a nursery (Beck et al. 2001), a large carbon sink (Fourqurean et al. 2012), as well as a protection against coastal erosion by attenuating waves and currents (Ondiviela et al. 2014). Among Mediterranean seagrasses, *Posidonia oceanica* (L.) Delile is the most studied due to its major ecological and economical role (Ruíz et al. 2009; Vassallo et al. 2013). The meadows it forms are observed from the surface to 40 m depth and are subject to the impact of human activities like coastal development, eutrophication, trawling, fish farms and anchoring (Boudouresque et al. 2009; Giakoumi et al. 2015b).

Along the French Mediterranean coasts, the main substrate affected by boat anchoring appear to be *Posidonia oceanica* (Holon et al. 2015).

Anchoring inside *P. oceanica* meadows seems to have various degrees of impact according to its density, frequency, the type of anchor and the depth as well as the size of boats (Boudouresque et al. 2012). Thus, repeated anchoring of cruise ships, at depths greater than 15 m, causes large-scale degradations of the meadows (Ganteaume et al. 2005b; Abadie et al. 2015). In the same way small units, less than 10 m long, can have an important impact at a local scale (Francour et al. 1999; Milazzo et al. 2004; Ceccherelli et al. 2007).

At the present day, studies mainly targeted the degradation of small boats at shallow depths i.e. less than 10 m. Few works treat the effects of larger pleasure ships anchoring which can measure more than 80 m long and have an important impact in confined areas (Abadie 2012). In order to assess their impact, several parameters are classically measured: the meadow density, the mat structure and the bottom cover (Boudouresque et al. 1995; Francour et al. 1999; Pergent-Martini et al. 2005). However, some of these metrics seem not relevant enough to assess the damages observed on *P. oceanica* meadows. More specifically, classical indicators can indicate a good state of conservation of the meadow with no anthropogenic impact when tracks of bare mat (Fig. 1a) are clearly observed (Milazzo et al. 2004; Ganteaume et al. 2005a).

Intensive anchoring can lead to modifications of substrate qualities, passing from meadows to large bare mat areas in which anchoring tracks are visible (Fig. 1b). This phenomenon also induces a change in sediments nature going from carbonate sediments possibly oxygenized by the living plant to fine particles filling crevices inside decomposing

* Corresponding author at: Station de Recherches Sous-marines et Oceanographiques (STARESO), Pointe Revellata, BP 33, 20260 Calvi, France.
E-mail address: arnaudabadie@aol.fr (A. Abadie).

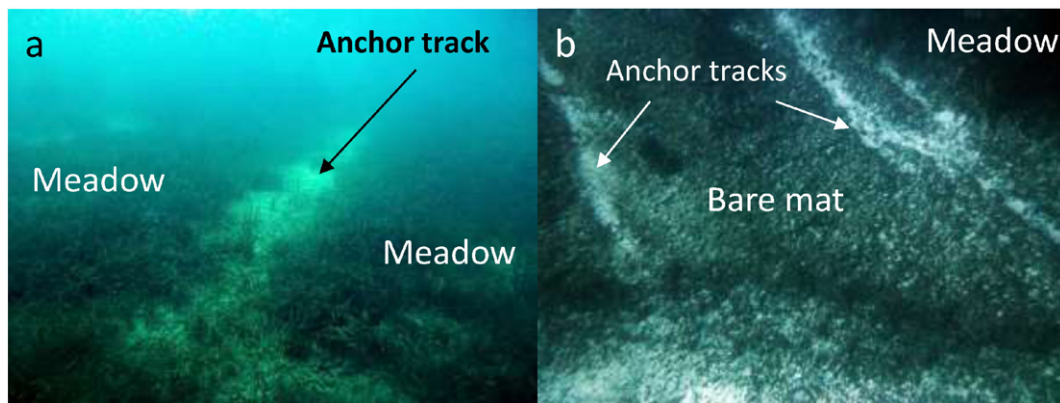


Fig. 1. a) Anchoring track inside a *P. oceanica* meadow at 30 m depth in Calvi Bay (Corsica, France); b) Bare mat of *Posidonia oceanica* generated by intensive anchoring at 18 m depth in Calvi Bay (Corsica, France) with furrows dug by large ships (photos: Arnaud Abadie).

organic tissues forming an anoxic bare mat (Mateo and Romero 1997). Such evolution of the substrate qualities can lead to the hydrogen sulfide (H_2S) intrusion in healthy meadows of the area, limiting the plant development (Holmer et al. 2003; Marbà et al. 2006). Thus, it has been observed that in carbonate sediments H_2S concentrations higher than $10 \mu M$ can cause a limitation of *P. oceanica* growth (Calleja et al. 2007).

This study aims to trigger a new way to approach the study of the anchoring impact on seagrass meadows by (1) testing the relevance of the classical structural tools (e.g. meadow density and cover, mat compactness); (2) exploring the relevance of chemical properties of the sediment as a new tool; and by extension; (3) assessing the impact of large leisure ships in a confined area; and lastly, (4) investigating the possible consequences for management and conservation of the areas concerned correlated with anchoring pressure.

2. Material and methods

This study was conducted in Alga Bay ($8^{\circ}43'52''$ E; $42^{\circ}34'20''$ N), an area of 1 km^2 of intensive anchoring in Calvi Bay (Corsica, France), colonized by a *P. oceanica* meadow covering 0.78 km^2 (Fig. 2). This site encompasses a particular structure called “return river”, a large sand patch where no seagrass meadow can grow, possibly due to strong bottom currents deriving from the surface ones reflected by the coast as described by Boudouresque and Meinesz (1982).

Six stations on two different sites in Calvi Bay were studied at three different depths, i.e. 10 m, 15 m and 20 m. Three stations were chosen as control in a continuous meadow with no traces of impact from human activities near the research facility of STARESO (C10, C15 and C20). Three stations were sampled at Alga Bay in areas of intensive anchoring (A10, A15 and A20) where it can generate anthropogenic patches.

2.1. Anchoring pressure assessment

A boat counting in Alga Bay was daily performed in the afternoon from May to October 2014 (the touristic period in Corsica) where anchoring frequency is the higher. Ships sizes were classified in three categories according to their length: <10 m; $10\text{--}20$ m; and >20 m. In parallel, the substrate of anchoring (meadow, rock or sand) was assessed. Moreover, the spatial distribution of boats anchored in the area was investigated by using AIS positioning system of leisure boats (www.marinetraffic.com) from 2012 to 2014 as well as direct catches obtained between 2012 and 2014. These observations were inserted in the GIS software ArcGis® 10 coupled with a map of *P. oceanica* meadows in the area from previous studies (Michel et al. 2012; Jousseume et al. 2013; Richir et al. 2015).

2.2. Meadow structure

The impact of anchoring on the *P. oceanica* meadows was assessed using six metrics commonly used in the study of its impact on seagrass meadows, i.e. the density, the proportion of orthotropic/plagiotropic rhizomes, the mat compactness, and the rhizomes baring. Ten replicates of the meadow density were randomly counted using quadrats of $25 \text{ cm} \times 40 \text{ cm}$ and classified according to the grid of UNEP-MAP-RAC/SPA (2011). Assessment of the proportion of orthotropic/plagiotropic rhizomes was performed during density measures and interpreted thanks to the classes made by Charbonnel et al. (2000) (Table 1). Mat compactness was investigated given the method and classification of Francour et al. (1999) using a 1 m long rod and a 5 kg weight, repeating ten times the measure for each station (Table 1). Twenty replicates per station of the rhizomes baring, i.e. the distance between rhizome and substrate, were measured and classified according to the protocol of Boudouresque et al. (1980). Meadow cover was measured using a $30 \text{ cm} \times 30 \text{ cm}$ quadrat hold at arm-length 3 m above the meadow (Gravez et al. 1995). Thirty replicates were performed for this measure and results were interpreted given the scale of Charbonnel et al. (2000) (Table 1). This measure was standardized by keeping the same observer for all measures and placing a depth gauge on the quadrat in order to avoid a distance variation from the vegetation. Finally, 20 longest standing leaves per station (corresponding to the canopy height) were measured in September after the touristic period).

2.3. Conservation Index (CI)

The Conservation Index (CI) was used as a reflection of damages in *P. oceanica* meadows visually observed by scuba diving. Triplicate transects were made to calculate the CI for each station according to the process of Moreno et al. (2001):

$$CI = L/(L + D)$$

where L (%) corresponds to the proportion of living *P. oceanica* and D (%) the percentage of bare mat. Four intervals were calculated to assess the meadow's state of conservation on each station:

1. $CI < (x_{\text{mean}} - 1/2 s)$
2. CI from $(x_{\text{mean}} - 1/2 s)$ to x_{mean}
3. CI from x_{mean} to $(x_{\text{mean}} + 1/2 s)$
4. $CI > (x_{\text{mean}} + 1/2 s)$

where mean (x_{mean}) and standard deviation (s) were calculated from all CI values of the study.

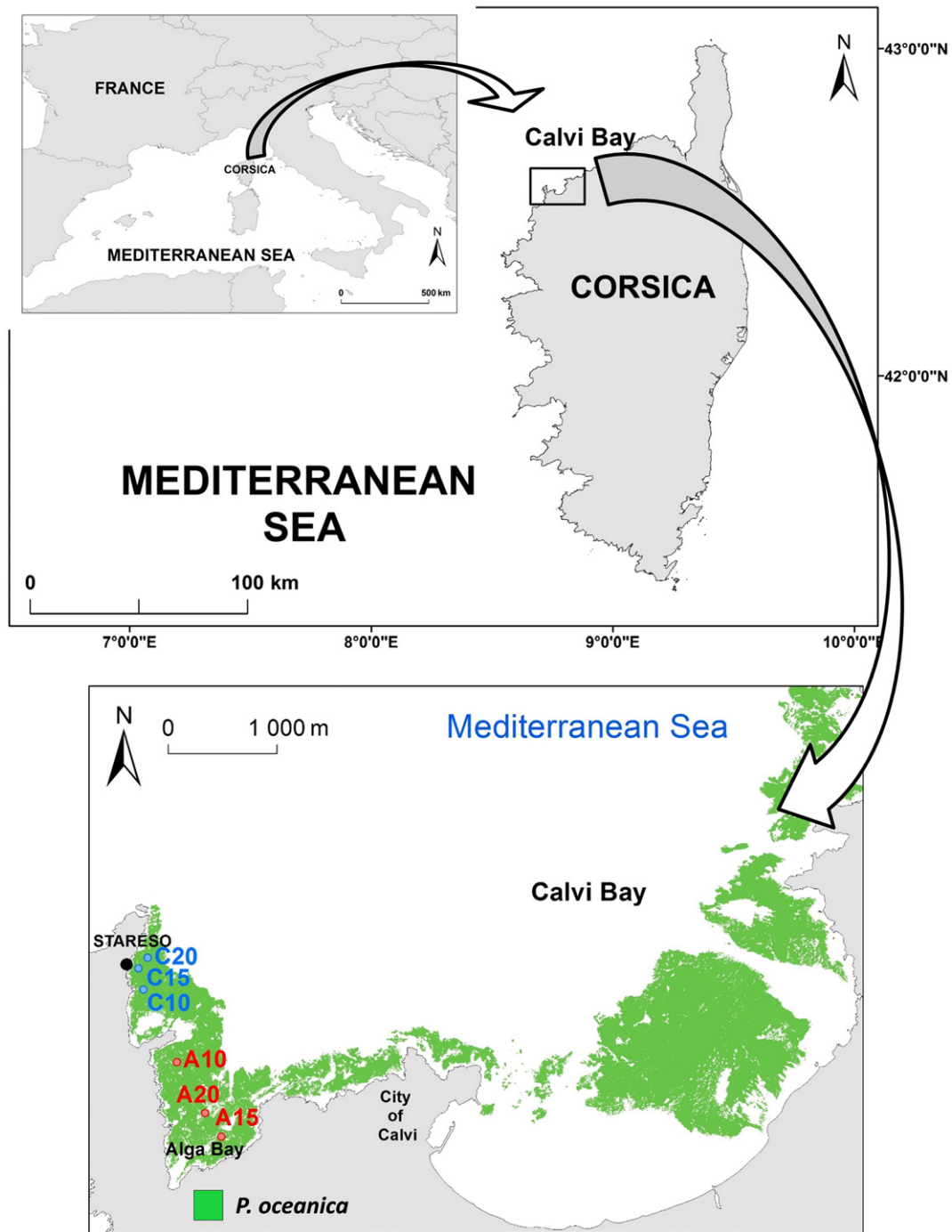


Fig. 2. Map of the study site. Green polygons in Calvi represent the mapping of *Posidonia oceanica* meadows realized with data of 2010 (Abadie 2012).

2.4. Sediment chemistry and nutrients

Sediment chemistry was studied by sampling pore water in the control (C) and anchoring (Am) meadow, as well as in anchoring bare mat patches' sediments (Ap) given the method of Gobert et al. (2006). Collection was performed in September after the warmest period of the year and in November when seawater temperature starts to decrease. Thus, the concentration of several essential components was studied in the substrate: dissolved dioxygen (O_2), free hydrogen sulfides (H_2S) and nutrients.

The pore water sampling for O_2 measurements was made within the oxygenic layer at a maximum depth of 1 cm in the sediments. O_2

concentration was obtained using a iodine titration with thiosulfate according to the method of Winkler (1888) with an automatized system for small sampling volumes (Carpenter 1965; Strickland and Parsons 1972) adapted by R. Biondo, (Laboratory of Oceanology–University of Liège).

The sample collection for H_2S and nutrient analysis was performed in triplicates inside the layer encompassing the plant living parts at 10 cm depth in the substrate. H_2S concentration was measured with a silver/sulfide ISM-146 FTH 25-XS electrode, coupled with a Sulfide Anti-Oxydant Buffer (SAOB) solution given the protocol of Brooks (2001). For detailed protocols of the measure of O_2 and H_2S , see Appendix S1 and S2 in supplementary material. Ammonium (NH_4^+) and Nitrite (NO_2^-)/Nitrate (NO_3^-)

Table 1
Meadow structure parameter interpretation according to their value.

Parameter	Unit	Range	Interpretation	Classification reference
Meadow density	Shoots·m ⁻²	Depends of depth	High Good Normal Moderate Bad	UNEP-MAP-RAC/SPA 2011
Proportion of orthotropic/plagiotropic rhizomes	%	<30% 30 to 70% >70%	Stable meadow Slight trend to progress Net trend to progress	Charbonnel et al. 2000
Mat compactness	cm	<50 cm 50 to 100 cm >100 cm	Strong compactness Medium compactness Weak compactness	Francour et al. 1999
Rhizomes baring	cm	<5 cm 5 to 15 cm >15 cm	Low baring Medium baring High baring	Boudouresque et al. 1980
Meadow cover	%	>80% 60–80% 40–60% 20–40% <20%	Very high covering High covering Medium covering Low covering Very low covering	Charbonnel et al. 2000

concentrations were measured by using a SKALAR auto-analyzer following the method of Aminot and K erouel (2007) adapted for oligotrophic samples (Laboratory of Oceanology—University of Li ege).

2.5. Statistical analyses

Statistical analyses were performed under the R 3.0.2 software using the FactoMineR package. Normality of structural parameters values was checked using a Shapiro–Wilk test. Stations were then statically tested two by two (control vs anchoring) for each depth (10 m, 15 m and 20 m) with an unpaired *t*-test (after checking their homoscedasticity with a Fisher test) for Gaussian data, and with a Mann Whitney test for non-parametric ones. *T*-tests were followed by a Tukey post-hoc test and Mann Whitney tests by a Dunns test.

Relations between the structural (i.e. meadow density, mat compactness, rhizomes baring, meadow cover, plagiotropic/orthotropic rhizomes proportion, Conservation Index and canopy height) and chemical (i.e. O₂, H₂S and NH₄⁺ concentrations) parameters were investigated with a Pearson matrix of correlation.

Finally, a cluster analysis was performed using the Ward method of aggregation and Euclidean distances between individuals for testing dissimilarity. Clusters were thus defined by minimizing the loss of inertia (i.e. the Euclidean distance) between several individuals (i.e. stations) when grouping them. Prior to the analyses, data were standardized to take into account the difference of units. First, structural parameters alone were considered. Then only chemical features were used. Finally, both structural and chemical parameters were computed in order to study the impact of chemical parameters on the evaluation of the meadows' state of conservation.

3. Results

3.1. Ships: spatial distribution and frequenting

The spatial ship distribution in Alga Bay follows a bathymetrical zonation according to data from 2012 to 2014 (Fig. 3). Small boats (length < 10 m) appear to anchor at shallow depths (< 5 m, Fig. 3). The majority of ships measuring between 10 and 20 m prefers to anchor outside the meadow in the main part of the return river at depths shallower than 15 m, when bigger ships choose to lay their anchors in the meadow from 10 to 30 m depth (Fig. 3).

Anchoring substrates vary widely according to ship sizes in Alga Bay (Fig. 3). Sand appears to be the preferred anchoring substrate for small boats (53%, Fig. 3) while those of medium and large size chose *P.*

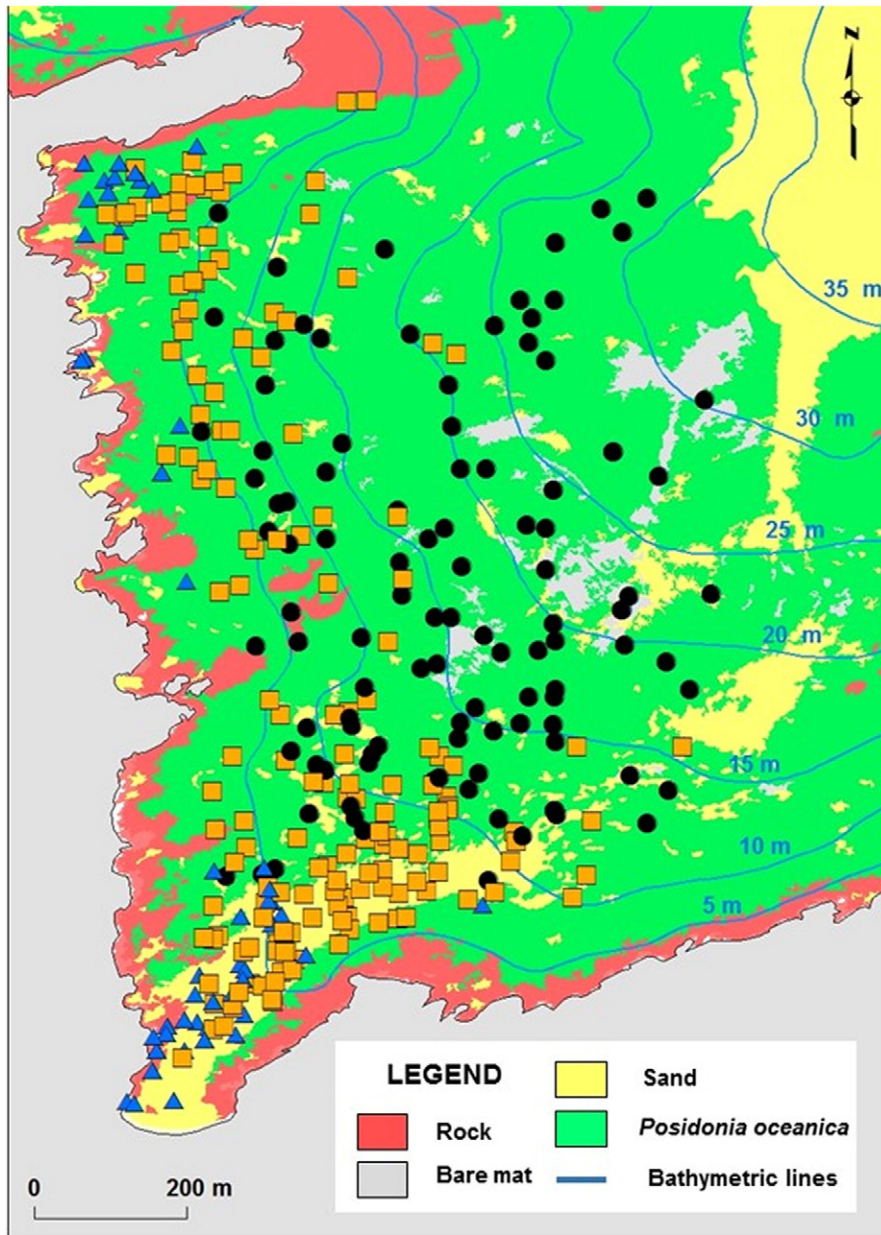
oceanica meadows (respectively 55% and 84%, Fig. 3). In general, ships anchor equally in sand (45%) and meadow (47%), few anchoring on rock (8%, Fig. 3).

A total of 1768 ships anchoring in Alga Bay were observed from May to October 2014, encompassing 43% (754 ships) of small boats (length < 10 m), 53% (935 ships) of medium size (length 10–20 m) and 7% (79 ships) of large size (length > 20 m) (Fig. 4). Period of most intense anchoring occurs from mid-July to mid-August, reaching a frequenting peak of 74 ships the 7th of August (Fig. 4).

3.2. Meadow structure and conservation

Meadow densities are classified as “normal” according to their depths for two control (C) stations (C10 and C20) and all anchoring (A) stations A10, A15 and A20 (Fig. 5a). The control station at 15 m depth appears as “good” (437 ± 112 shoots.m⁻¹). Mean values of meadow density obtained at 15 m depth are significantly different (*t*-test: *t* = 892; *p* = 0.0097; *df* = 18). The same statement is made concerning the proportion of orthotropic/plagiotropic rhizomes which correspond to a stable meadow for all stations (Fig. 5e) except for the station A20 which is considered to have a “slight trend to progress” (70/30 ± 25%). Mat compactness is characterized as “strong” for all stations sampled (Fig. 5b) with the exception of A20 with a “medium” mat compactness revealed by a relatively high penetration length of the rode (51 ± 9 cm). A significant difference (*t*-test: *t* = 6.172; *p* < 0.0001; *df* = 18) of the compactness was observed at 20 m between the control station and the anchoring one. Rhizomes baring is “medium” for all stations except for C10 (3.6 ± 1.9 cm) and A20 (2.0 ± 1.1 cm) where it is “weak” (Fig. 5c), these differences at 10 m (*t*-test: *t* = 4.493; *p* = 0.0001; *df* = 28) and 20 m (Mann Whitney test: *p* = 0.0002; *U* = 24) being confirmed by the statistical analysis. Meadow cover varies from “very high” (C10, C15, and A10) to “high” (C20, A15 and A20) (Fig. 5d), thus highlighting a difference of the mean meadow cover between the control station and the anchoring one at 15 m depth (Mann Whitney test: *p* < 0.0001; *U* = 182.5). At last, canopy height shows no significant differences between control and anchoring stations, its value decreasing from June to September at all depths (Fig. 5f).

The state of conservation of each control station, expressed by the Conservation index (CI), is the higher for C10 and C15 (1 ± 0.00 for each station), and decreases (0.98 ± 0.03) for C20 (Table 2). At Alga Bay, the anchoring site, the station at 10 m depth (A10) appears to have a state of conservation (CI = 0.97 ± 0.03) similar to C20 while the deeper station stations (A15 and A20) have a lowest one (with a CI of respectively 0.85 ± 0.11 and 0.79 ± 0.15; Table 2).



Boat length classes and anchoring substrate

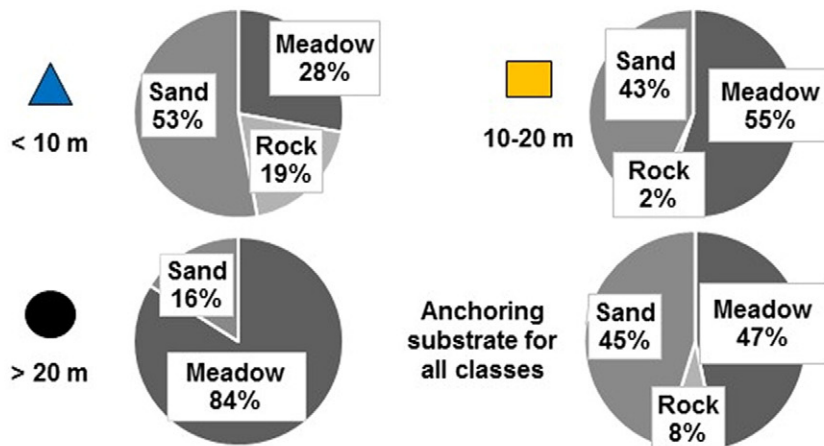


Fig. 3. Ship positioning using AIS and direct catches from 2012 to 2014 at Alga Bay coupled with a map of marine habitats and proportion of anchoring on the three different substrates in 2014 for ships with a length lower than 10 m; between 10 and 20 m, upper than 20 m and for all classes.

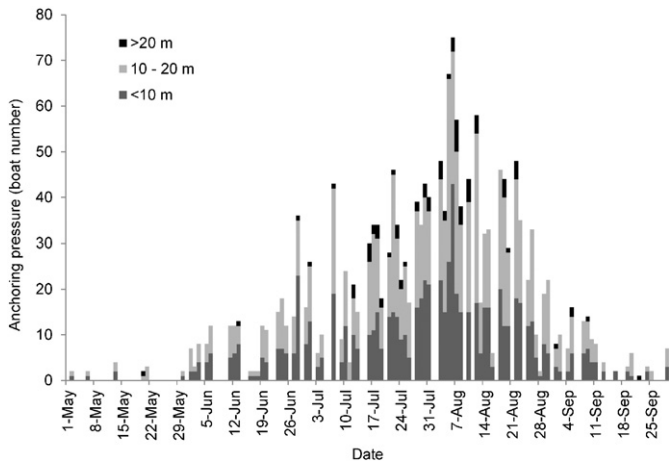


Fig. 4. Daily boat counting and size classes from June to September 2014 in Alga Bay.

Table 2

Interpretation scale of the Conservation Index (CI) and its mean value (\pm SE). C: control; A: anchoring, 10, 15 and 20: depth.

CI classes	Color	Station	CI	CI class
CI > 0.99	Green	C10	1.00 (\pm 0.00)	Green
0.93 < CI \leq 0.99	Yellow	A10	0.97 (\pm 0.03)	Yellow
0.88 < CI \leq 0.93	Orange	C15	1.00 (\pm 0.00)	Green
CI < 0.88	Red	A15	0.85 (\pm 0.11)	Red
		C20	0.98 (\pm 0.03)	Yellow
		A20	0.79 (\pm 0.15)	Red

3.3. Patch and meadow chemistry

In September, lowest concentrations of O₂ were found inside the patch at –10 m (Ap10: 102.7 μ M) while a decrease with the depth in control meadows is observed (Table 3). The same pattern is observed in November with concentrations similar in both control (C) and anchoring (Am) meadows. Low concentrations in O₂ are related to high

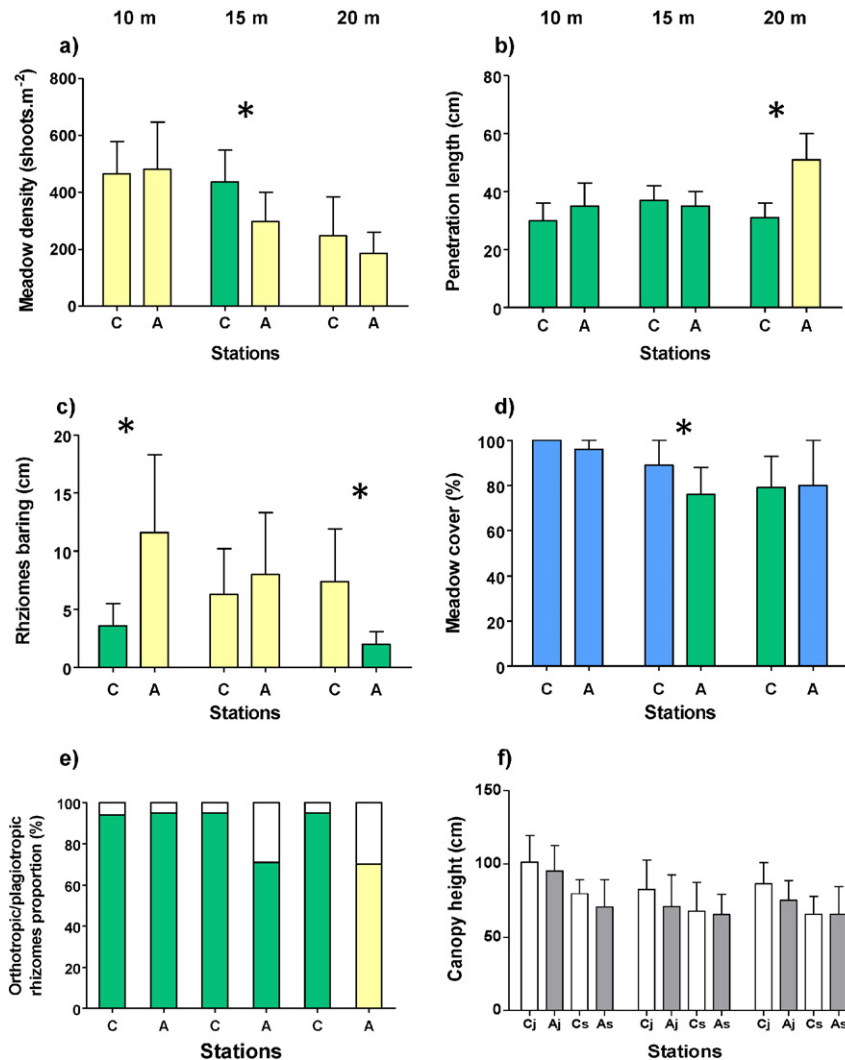


Fig. 5. Mean value (\pm SE) at 10, 15 and 20 m depth of a) meadow density (green: good; yellow: normal); b) penetration length (green: high compactness; yellow: medium compactness); c) rhizomes baring (green: weak; yellow: medium); d) meadow cover (blue: very high covering; green: high covering); e) orthotropic/plagiotropic rhizomes proportion, colored bar: orthotropic, white bar: plagiotropic (green: stable meadow; yellow: slight trend to progress); f) mean canopy height. Above a pair of bars indicates a significant difference between the two mean values. C = control; A = anchoring; j = June; s = September.

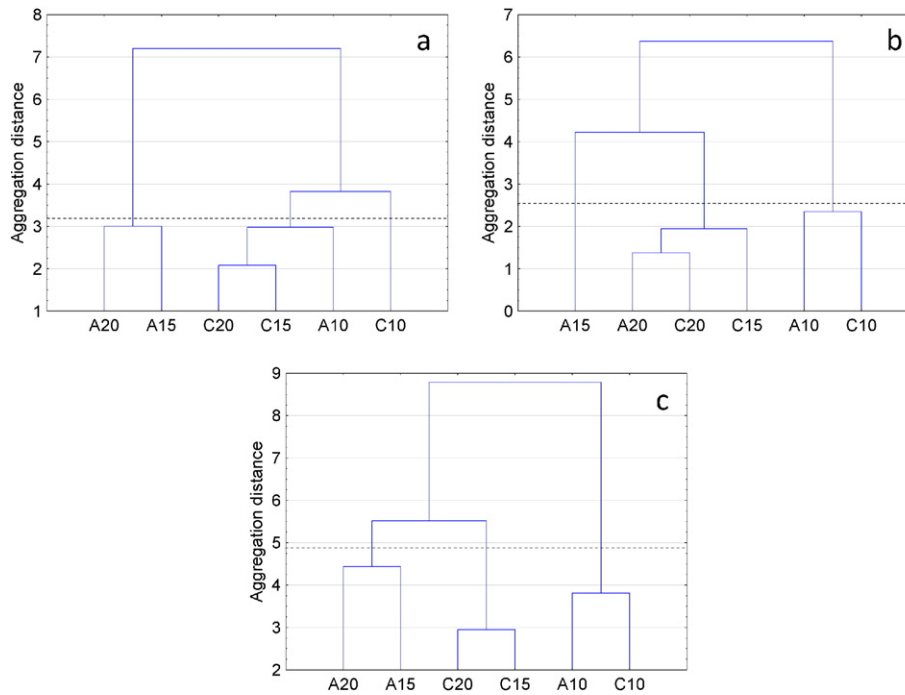


Fig. 6. Cluster analysis of the stations described by a) structural parameters alone; b) chemical parameters alone and c) both structural and chemical parameters of the control (C) and anchoring (A) meadow at a depth of 10, 15 and 20 m. The dotted line materializes classes' separation according to their dissimilarity.

et al. 2013) or in Port-Cros, France witnessing up to $8.8 \text{ boats} \cdot \text{ha}^{-1} \cdot \text{d}^{-1}$ (Ganteaume et al. 2005a). However, anchoring pressure cannot be described by boats density alone but requires in complement the proportion of boats size and their favorite substrate. In this case, although being less numerous than small and medium boats, big ships (length > 20 m) largely favors meadows for anchoring (84%) to sandy and rocky bottoms, leading to more important mechanical damages at higher depths (Ganteaume et al. 2005b). It is mainly due to the fact that these ships need deep water to anchor and that *P. oceanica* meadows are more present at these depths. Conversely, small boats anchor on shallow sites where rocky and sandy substrates are dominant. Thus, taking into account all these aspects, anchoring appears to be

intensive in Alga Bay with a high probability of an impact visible on the meadow structure.

4.2. From structural to chemical impact of anchoring

In this study, the analysis of the classical parameters referring to the structure of the *Posidonia oceanica* meadow are not clearly able to depict the direct observation made by scuba diving (i.e. large patches of bare mat crossed by anchoring tracks, Fig. 1). Here rhizomes baring and mat compactness appear not relevant for the study of anchoring, anchors impacting the superficial part of the mat while mat compactness

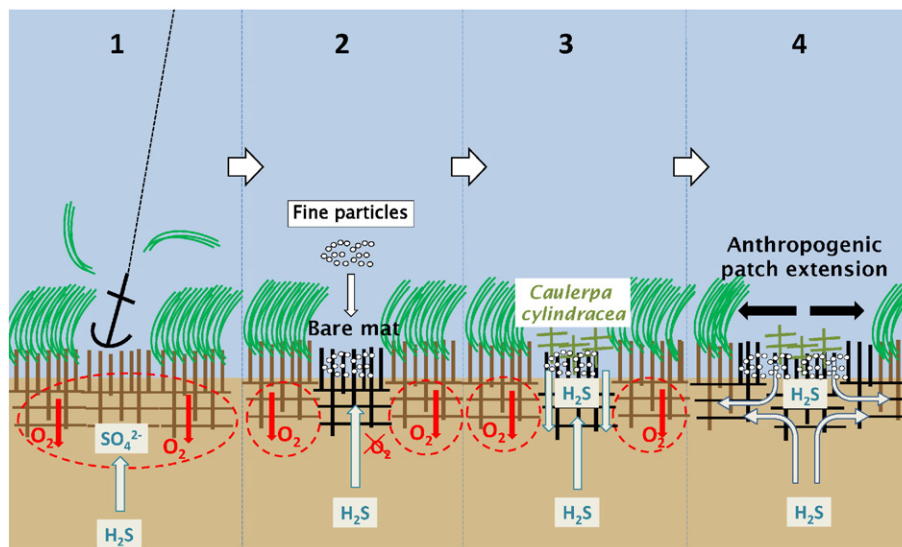


Fig. 7. Hypothesis on the succession of processes from mechanical damages to the expansion of anthropogenic patches; 1) destruction of the canopy by anchoring, 2) fine particles deposit leading to an increase of the organic matter and its degradation; 3) settlement of the alien species *Caulerpa cylindracea*; and 4) expansion of the anchoring patch with intrusion of hydrogen sulfide (H_2S).

investigate the whole mat thickness. This statement has already been made for mat compactness by Milazzo et al. (2004) and Ganteaume et al. (2005a) for meadow cover and density. Unlike these works, this case encompasses the study of big boats damages and not only the one of small to medium ships. Thus, large ships anchoring will directly pull out whole portions of the meadow and lead to the creation of anthropogenic patches (Fig. 7), revealed by the Conservation Index, the meadow density, and the proportion of orthotropic/plagiotropic rhizomes. In contrast rhizomes will not be partially uprooted and no effect will be witnessed by the rhizomes baring and mat compactness. Thus, large ships' anchoring causes a mechanical destruction similar to the trawling one (Boudouresque et al. 2009; Kiparissis et al. 2011; Pergent et al. 2013).

Another limit of the structural parameters is their incapacity to assess the impact of the substrate change (from leafy to bare mat). Seagrasses are known to be able to release oxygen in the sediments through their roots to create a small oxic zone (Pedersen et al. 1998; Greve et al. 2003), this function being suppressed by the destruction of the canopy by anchoring and thus of the photosynthesis process. These modifications are particularly observable by studying the impact of fish farms, their action leading to large areas of bare mats where an increase of the organic matter in decomposition leads to a decrease of the oxygen available and the intrusion of hydrogen sulfide (Pergent-Martini et al. 2006; Holmer and Frederiksen 2007; Apostolaki et al. 2010). Although no input of organic matter - at least not in the same range as fish farms - are involved in anchoring, the same process is observed here with a decrease of oxygen concentration at the surface of the sediments at all depths and an intrusion of hydrogen sulfide (H_2S) inside anchoring patches. High temperatures enhancing high concentrations of H_2S in *Posidonia oceanica* meadows (García et al. 2012), a decrease along with the temperature should be observed in this case in November. In contrary, an increase in both meadows and patches is observed at the stations where the biggest boats anchor (A15 and A20), no thermocline being observed during the two sampling periods with an homogeneous water column of a temperature of 23.5 °C in September and 20.8 °C in November (Richir et al. 2015).

The higher concentrations of pore water inorganic nitrate found in Alga Bay at 15 and 20 m depth inside anchoring patches and the surrounding meadow, are another consequence of the change in substrate. Here, the higher concentrations in ammonium (NH_4^+) could be the result of the particulate organic nitrate's ammonification (Romero et al. 2006). These values constitute a sufficient nutrient enrichment for *P. oceanica* development although recolonization does not occur (López et al. 1998; Gobert et al. 2002).

These unsuitable conditions for a recolonization by the meadow (Marbà et al. 2006), coupled with the continuation of the high anchoring rate in the area, will thus favor the expansion of anthropogenic patches and modify the whole sediment chemistry (Pergent-Martini et al. 2006). In this way, a new arrangement of anthropogenic patches, possibly combined with natural ones, leads to a new seascape (Abadie et al. 2015). The new areas of bare mat thus created are a suitable substrate for the settlement of the alien species *Caulerpa cylindracea* Sonder (Katsanevakis et al. 2010; Kiparissis et al. 2011) which is able to release H_2S inside sediments (Garcias-Bonet et al. 2008) (Fig. 7). The so new-generated small patches may lead to a long-term larger fragmentation of the meadow through aggregation process. Such phenomenon has been studied in *Zostera noltii* Hornemann meadows on the Portuguese coast by Cunha et al. (2005). In a wider viewpoint, vegetation systems, and thus seagrass seascapes, are theoretically subject to aggregation models (Irvine et al. 2016).

4.3. The contribution of chemical parameters in seagrass meadows conservation's assessment

This study highlights the fact that using structural tools alone to assess anchoring in seagrass meadows can lead to a misevaluation of their

state of conservation. In the present work, control stations at 15 and 20 m, meaning meadows with no traces of impact from human activities, form a cluster, i.e. they have the same characteristics than the anchoring station at 10 m depth. It reflects no significant anchoring impact on the meadow at this depth. Similarly, chemical features alone aggregate a station visibly impacted by anchoring (A20) with meadows (C15 and C20) under no anthropogenic pressures. When adding chemical parameters to the structural ones, this station is classified in the same group than the control site at the same depth, revealing that no impact is observable. In the same way stations A15 and A20 are grouped, stating the impact of anchoring at these depths. Considering the long term process induced by a change in sediments chemistry, the measure of several chemical parameters can provide information about the possible recovery of a meadow under an intensive human pressure (Holmer et al. 2008). We suspect that it will be difficult for the meadow in Alga Bay at 15 and 20 m depth to recover given the continuation of anchoring while the meadow at 10 m seems to have the same state of conservation than the control one.

Observation of chemical modifications within seagrass meadows linked with anthropogenic impacts has already been highlighted by Jones and Unsworth (2016) in *Zostera marina* Linnaeus across the British Coast. This study thus reveals an excess of nitrogen within *Z. marina* leaves, associating this observation with the poor water quality and the disturbance of boat-based activities, of which anchoring. Chemical response of the plant to anthropogenic pressures was also stated within *Cymodocea nodosa* (Ucria) Ascherson meadows in Greece by Papathanasiou et al. (2016). These accounts indicate that physiological and chemical changes observed within the meadows are not confined to *P. oceanica* and the Mediterranean Sea. They are also observed in other seagrass species with contrasted morphology and seasonal response to environmental changes, supporting the importance of multi-disciplinary approaches for conservation assessment.

Measurement of chemical features remains however time consuming and requires specific equipment for each element studied. In this way, new simplified protocols should be developed. Nevertheless, like structural parameters who have already proved their utility to assess seagrasses meadow state of conservation (Montefalcone et al. 2006; Gobert et al. 2009; Lopez y Royo et al. 2010), chemical measures are non-destructive, have a good capacity of replication and a great potential to provide a deeper insight (Romero et al. 2007). Moreover, these tools can be integrated in the future conservation indices based on an ecosystemic approach in the framework of the European Marine Strategy Framework Directive (MSFD) (Personnic et al. 2014). They also can be used in the development of descriptors specific to anchoring, built for an easy comprehension by stakeholders and managers.

5. Conclusion

Mechanical damages of intensive anchoring in *P. oceanica* meadows induce a change in the substrate nature leading to the generation of bare mat areas (anthropogenic patches) at 15 and 20 m depth where the bigger ships are observed. Modifications in chemical processes, and more precisely the intrusion of hydrogen sulfide, decrease the possibility of a recolonization by the meadow leading to the expansion of patches. The development of non-destructive chemical indicators easy to perform, coupled with structural tools, will provide precious information for assisting decisions in conservation issues about mechanical impacts in seagrass meadows which, in some cases, are stoppable when effectively assessed (Giakoumi et al. 2015a).

Acknowledgment

The authors thank Willy Champenois and Alberto V. Borges from the Chemical Oceanography Unit for their scientific advice and participation all along the analysis process of oxygen and hydrogen sulfides, as well as Renzo Biondo from the Laboratory of Oceanology of the University of

Liège for his support during the nutrient measurements. This study is part of the STARE-CAPMED (STation of Reference and rEsearch on Change of local and global Anthropogenic Pressures on Mediterranean Ecosystems Drifts) program funded by the Territorial Collectivity of Corsica and by The French Water Agency (PACA-Corsica). A. Abadie acknowledges a CIFRE Ph.D. grant (2013/0470) of the French ANRT (Association Nationale Recherche Technologie). This article is the MARE publication No. 332.

Appendix A. Supplementary data

Supplementary data to this article can be found online at <http://dx.doi.org/10.1016/j.marpolbul.2016.06.022>.

References

- Abadie, A., 2012. Evolution des herbiers à *Posidonia oceanica* (L.) Delile dans la baie de Calvi (Corse, France) et influence de l'ancrage dans la baie de l'Alga (Professional Master Master thesis) Aix-Marseille University, Marseille, France.
- Abadie, A., Gobert, S., Bonacorsi, M., Lejeune, P., Pergent, G., Pergent-Martini, C., 2015. Marine space ecology and seagrasses. Does patch type matter in *Posidonia oceanica* seascapes? *Ecol. Indic.* 57, 435–446.
- Aminot, A., Kérouel, R., 2007. Dosage automatique des nutriments dans les eaux marines Editions Quae Ifremer. Versailles, Plouzané.
- Apostolaki, E.T., Holmer, M., Marbà, N., Karakassis, I., 2010. Degrading seagrass (*Posidonia oceanica*) ecosystems: a source of dissolved matter in the Mediterranean. *Hydrobiologia* 649, 13–23.
- Beck, M.W., Heck, K.L., Able, K.W., Childers, D.L., Eggleston, D.B., Gillanders, B.M., Halpern, B.S., Hays, C.G., Hoshino, K., Minello, T.J., Orth, R.J., Sheridan, P.F., Weinstein, M.P., 2001. The identification, conservation, and management of estuarine and marine nurseries for fish and invertebrates. *Bioscience* 51, 633–641.
- Boudouresque, C.F., Meinesz, A., 1982. Découverte de l'herbier de posidonie vol. 4. Cah. Parc nation. Port-Cros, France.
- Boudouresque, C.F., Giraud, G., Panayotidis, P., 1980. Végétation marine de l'île de Port-Cros (parc National). XIX: mise en place d'un transect permanent. Travaux Scientifiques du Parc National de Port-Cros Vol. 6, pp. 207–221.
- Boudouresque, C.F., Arrighi, F., Finelli, F., Lefevre, J.R., 1995. Arrachage des faisceaux de *Posidonia oceanica* par les ancres: protocole d'étude. Rapports Commission Internationale de la Mer Méditerranée Vol. 34, p. 21.
- Boudouresque, C.F., Bernard, G., Pergent, G., Shili, A., Verlaque, M., 2009. Regression of Mediterranean seagrasses caused by natural processes and anthropogenic disturbances and stress: a critical review. *Bot. Mar.* 52, 395–418.
- Boudouresque, C.F., Bernard, G., Bonhomme, P., Charbonnel, E., Diviacco, G., Meinesz, A., Pergent, G., Pergent-Martini, C., Ruitton, S., Tunesi, L., 2012. Protection and conservation of *Posidonia oceanica* meadows. RAMOGE pub, Tunis.
- Brooks, K.M., 2001. An evaluation of the relationship between salmon farm biomass, organic inputs to sediments, physicochemical changes associated with those inputs and the infaunal response – with emphasis on total sediment sulfides, total volatile solids, and oxidation–reduction potential as surrogate endpoints for biological monitoring. Aquatic Environmental Sciences, 644 Old Eaglemount Road, Port Townsend, Washington 98368.
- Calleja, M.L., Marbà, N., Duarte, C.M., 2007. The relationship between seagrass (*Posidonia oceanica*) decline and sulfide porewater concentration in carbonate sediments. *Estuar. Coast. Shelf Sci.* 73, 583–588.
- Carpenter, J.H., 1965. The accuracy of the Winkler method for dissolved oxygen analysis. *Limnol. Oceanogr.* 10, 135–140.
- Ceccherelli, G., Campo, D., Milazzo, M., 2007. Short-term response of the slow growing seagrass *Posidonia oceanica* to simulated anchor impact. *Mar. Environ. Res.* 63, 341–349.
- Charbonnel, E., Boudouresque, C.F., Meinesz, A., Bernard, G., Bonhomme, P., Patrone, J., Kruczek, R., Cottalorda, J.M., Bertrand, M.C., Foret, P., Ragazzi, M., Le Direach, L., 2000. Le Réseau de Surveillance Posidonie de la Région Provence-Alpes-Côte d'Azur. Première partie: Présentation et guide méthodologique. Année 2000. Région PACA/Agence de l'Eau RMC/GIS Posidonie/CQEL 13/CQEL 83/Conseil Général 6, Marseille, France.
- Costanza, R., d'Arge, R., de Groot, R., Farber, S., Grasso, M., Hannon, B., Limburg, K., Naeem, S., O'Neill, R.V., Paruelo, J., Raskin, R.G., Sutton, P., van den Belt, M., 1997. The value of the world's ecosystem services and natural capital. *Nature* 387, 253–260.
- Cullen-Unsworth, L., Unsworth, R., 2013. Seagrass meadows, ecosystem services, and sustainability. *Environ. Sci. Policy Sustain. Dev.* 55, 14–28.
- Cunha, A.H., Santos, R.P., Gaspar, A.P., Bairois, M.F., 2005. Seagrass landscape-scale changes in response to disturbance created by the dynamics of barrier-islands: a case study from Ria Formosa (Southern Portugal). *Estuar. Coast. Shelf Sci.* 64, 636–644.
- Fourqurean, J.W., Duarte, C.M., Kennedy, H., Marbà, N., Holmer, M., Mateo, M.A., Apostolaki, E.T., Kendrick, G.A., Krause-Jensen, D., McGlathery, K.J., Serrano, O., 2012. Seagrass ecosystems as a globally significant carbon stock. *Nat. Geosci.* 5, 505–509.
- Francour, P., Ganteaume, A., Poulain, M., 1999. Effects of boat anchoring in *Posidonia oceanica* seagrass beds in the Port-Cros National Park (North-Western Mediterranean Sea). *Aquat. Conserv. Mar. Freshwat. Ecosyst.* 9, 391–400.
- Ganteaume, A., Bonhomme, P., Bernard, G., Poulain, M., Boudouresque, C.F., 2005a. Impact de l'ancrage des bateaux de plaisance sur la prairie à *Posidonia oceanica* dans le Parc national de Port-Cros (Méditerranée nord-occidentale). *Sci. Rep. Port-Cros Natl. Park* 21, 147–162.
- Ganteaume, A., Bonhomme, P., Emery, E., Hervé, G., Boudouresque, C.F., 2005b. Impact sur la prairie à *Posidonia oceanica* de l'amarrage des bateaux de croisière, au large du port de Porquerolles (Provence, France, Méditerranée). *Sci. Rep. Port-Cros Natl. Park* 21, 163–173.
- García, R., Sánchez-Camacho, M., Duarte, C.M., Marbà, N., 2012. Warming enhances sulphide stress of Mediterranean seagrass (*Posidonia oceanica*). *Estuar. Coast. Shelf Sci.* 113, 240–247.
- Garcias-Bonet, N., Marba, N., Holmer, M., Duarte, C.M., 2008. Effects of sediment sulfides on seagrass *Posidonia oceanica* meristematic activity. *Mar. Ecol. Prog. Ser.* 372, 1–6.
- Giakoumi, S., Sini, M., Gerovasileiou, V., Mazar, T., Beher, J., Possingham, H.P., Abdulla, A., Çinar, M.E., Dendrinou, P., Gucu, A.C., Karamanlidis, A.A., Rodic, P., Panayotidis, P., Taskin, E., Jaklin, A., Voultziadou, E., Webster, C., Zenetos, A., Katsanevakis, S., 2013. Ecoregion-based conservation planning in the Mediterranean: dealing with large-scale heterogeneity. *PLoS One* 8, e76449.
- Giakoumi, S., Brown, C.J., Katsanevakis, S., Saunders, M.I., Possingham, H.P., 2015a. Using threat maps for cost-effective prioritization of actions to conserve coastal habitats. *Mar. Policy* 61, 95–102.
- Giakoumi, S., Halpern, B.S., Michel, L.N., Gobert, S., Sini, M., Boudouresque, C.F., Gambi, M.C., Katsanevakis, S., Lejeune, P., Montefalcone, M., Pergent, G., Pergent-Martini, C., Sanchez-Jerez, P., Velimirov, B., Vizzini, S., Abadie, A., Coll, M., Guidetti, P., Micheli, F., Possingham, H.P., 2015b. Towards a framework for assessment and management of cumulative human impacts on marine food webs. *Conserv. Biol.* 29, 1228–1234.
- Gobert, S., Laumont, N., Bouquegneau, J.M., 2002. *Posidonia oceanica* meadow: a low nutrient high chlorophyll (LNHC) system? *BMC Ecol.* 2, 9.
- Gobert, S., Lepoint, G., Biondo, R., Bouquegneau, J.M., 2006. *In situ* sampling of pore waters from seagrass meadows. *Biol. Mar. Mediterr.* 13, 230–234.
- Gobert, S., Sartoretto, S., Rico-Raimondino, V., Andral, B., Chery, A., Lejeune, P., Boissery, P., 2009. Assessment of the ecological status of Mediterranean French coastal waters as required by the Water Framework Directive using the *Posidonia oceanica* Rapid Easy Index: PREI. *Mar. Pollut. Bull.* 58, 1727–1733.
- Gravez, V., Gelin, A., Charbonnel, E., Francour, P., Abellard, O., Remonnay, O., 1995. Surveillance de l'herbier de Posidonie de la baie du Prado (Marseille) - Suivi 1995.
- Grech, A., Chartrand-Miller, K., Erfteimeijer, P.L.A., Fonseca, M.S., McKenzie, L., Rasheed, M., Taylor, H., Coles, R., 2012. A comparison of threats, vulnerabilities and management approaches in global seagrass bioregions. *Environ. Res. Lett.* 7, 024006.
- Greve, T.M., Borum, J., Pedersen, O., 2003. Meristematic oxygen variability in eelgrass (*Zostera marina*). *Limnol. Oceanogr.* 48, 210–216.
- Halpern, B.S., Walbridge, S., Selkoe, K.A., Kappel, C.V., Micheli, F., D'Agrosa, C., Bruno, J.F., Casey, K.S., Ebert, C., Fox, H.E., Fujita, R., Heinemann, D., Lenihan, H.S., Madin, E.M.P., Perry, M.T., Selig, E.R., Spalding, M., Steneck, R., Watson, R., 2008. A global map of human impact on marine ecosystems. *Science (Washington, DC)* 319, 948–952.
- Holmer, M., Frederiksen, M.S., 2007. Stimulation of sulfate reduction rates in Mediterranean fish farm sediments inhabited by the seagrass *Posidonia oceanica*. *Biogeochemistry (Dordrecht)* 85, 169–184.
- Holmer, M., Duarte, C.M., Marbà, N., 2003. Sulfur cycling and seagrass (*Posidonia oceanica*) status in carbonate sediments. *Biogeochemistry* 66, 223–239.
- Holmer, M., Argyrou, M., Dalsgaard, T., Danovaro, R., Diaz-Almela, E., Duarte, C.M., Frederiksen, M., Grau, A., Karakassis, I., Marbà, N., Mirto, S., Pérez, M., Pusceddu, A., Tsapakis, M., 2008. Effects of fish farm waste on *Posidonia oceanica* meadows: synthesis and provision of monitoring and management tools. *Mar. Pollut. Bull.* 56, 1618–1629.
- Holon, F., Mouquet, N., Boissery, P., Bouchoucha, M., Delaruelle, G., Tribot, A.S., Deter, J., 2015. Fine-scale cartography of human impacts along French Mediterranean coasts: a relevant map for the management of marine ecosystems. *PLoS One* 10, e0135473.
- Irvine, M.A., Bull, J.C., Keeling, M.J., 2016. Aggregation dynamics explain vegetation patch-size distributions. *Theor. Popul. Biol.* 108, 70–74.
- Jones, B.L., Unsworth, R.K.F., 2016. The perilous state of seagrass in the British Isles. *R. Soc. Open Sci.* 3.
- Jorda, G., Marba, N., Duarte, C.M., 2012. Mediterranean seagrass vulnerable to regional climate warming. *Nat. Clim. Chang.* 2, 821–824.
- Jousseume, M., Buron, K., Chery, A., Lejeune, P., 2013. Étude relative à la plaisance et aux mouillages en Corse: Rapport final – Année 2012/2013. STARESO, Calvi, Corsica.
- Katsanevakis, S., Issaris, Y., Poursanidis, D., Thessalou-Legaki, M., 2010. Vulnerability of marine habitats to the invasive green alga *Caulerpa racemosa* var. *cylindracea* within a marine protected area. *Mar. Environ. Res.* 70, 210–218.
- Kiparissis, S., Fakiris, E., Papatheodorou, G., Geraga, M., Kornaros, M., Kapareliotis, A., Ferentinos, G., 2011. Illegal trawling and induced invasive algal spread as collaborative factors in a *Posidonia oceanica* meadow degradation. *Biol. Invasions* 13, 669–678.
- Lopez y Royo, C., Casazza, G., Pergent-Martini, C., Pergent, G., 2010. A biotic index using the seagrass *Posidonia oceanica* (BiPo), to evaluate ecological status of coastal waters. *Ecol. Indic.* 10, 380–389.
- López, N.I., Duarte, C.M., Vallespinós, F., Romero, J., Alcoverro, T., 1998. The effect of nutrient additions on bacterial activity in seagrass (*Posidonia oceanica*) sediments. *J. Exp. Mar. Biol. Ecol.* 224, 155–166.
- Marbà, N., Holmer, M., Garcia, E., Barron, C., 2006. Seagrass beds and coastal biogeochemistry. In: Larkum, A.W.D., Orth, R.J., Duarte, C.M. (Eds.), *Seagrasses: Biology, Ecology and Conservation*. Springer.
- Mateo, M.A., Romero, J., 1997. Detritus dynamics in the seagrass *Posidonia oceanica*: elements for an ecosystem carbon and nutrient budget. *Mar. Ecol. Prog. Ser.* 151, 43–53.
- Michel, L., Abadie, A., Biondo, R., Borges, A., Collignon, A., Champenois, W., Chery, A., Donnay, A., Gobert, S., Goffart, A., Hecq, J.-H., Pelaprat, C., Pere, A., Plaza, S., Thomé, J.-P., Volpon, A., Lejeune, P., 2012. STARE-CAPMED – Rapport d'activité 2012. STARESO.
- Milazzo, M., Badalamenti, F., Ceccherelli, G., Chemello, R., 2004. Boat anchoring on *Posidonia oceanica* beds in a marine protected area (Italy, western Mediterranean): effect of anchor types in different anchoring stages. *J. Exp. Mar. Biol. Ecol.* 299, 51–62.

- Montefalcone, M., Albertelli, G., Bianchi, C.N., Mariani, M., Morri, C., 2006. A new synthetic index and a protocol for monitoring the status of *Posidonia oceanica* meadows: a case study at sanremo (Ligurian Sea, NW Mediterranean). *Aquat. Conserv. Mar. Freshwat. Ecosyst.* 16, 29–42.
- Moreno, D., Aguilera, P.A., Castro, H., 2001. Assessment of the conservation status of seagrass (*Posidonia oceanica*) meadows: implications for monitoring strategy and the decision-making process. *Biol. Conserv.* 102, 325–332.
- Ondiviela, B., Losada, I.J., Lara, J.L., Maza, M., Galván, C., Bouma, T.J., van Belzen, J., 2014. The role of seagrasses in coastal protection in a changing climate. *Coast. Eng.* 87, 158–168.
- Papathanasiou, V., Orfanidis, S., Brown, M.T., 2016. *Cymodocea nodosa* metrics as bioindicators of anthropogenic stress in N. Aegean, Greek coastal waters. *Ecol. Indic.* 63, 61–70.
- Pedersen, M.O., Borum, J., Duarte, C.M., Fortes, M.D., 1998. Oxygen dynamics in the rhizosphere of *Cymodocea rotundata*. *Mar. Ecol. Prog. Ser.* 169, 283–288.
- Pergent, G., Pergent-Martini, C., Boudouresque, C.F., 2013. Trawling impacts on Mediterranean seagrass. *Seagrass-Watch* 26–30.
- Pergent-Martini, C., Leoni, V., Pasqualini, V., Ardizzone, G.D., Balestri, E., Bedini, R., Belluscio, A., Belsher, T., Borg, J., Boudouresque, C.F., Boumaza, S., Bouquegneau, J.-M., Buiá, M.C., Calvo, S., Cebrian, J., Charbonnel, E., Cinelli, F., Cossu, A., Di Maida, G., Dural, B., Francour, P., Gobert, S., Lepoint, G., Meinesz, A., Molenaar, H., Mansour, H.M., Panayotidis, P., Peirano, A., Pergent, G., Piazzì, L., Pirrotta, M., Relini, G., Romero, J., Sanchez-Lizaso, J.L., Semroud, R., Shembri, P., Shili, A., Tomasello, A., Velimirov, B., 2005. Descriptors of *Posidonia oceanica* meadows: use and application. *Ecol. Indic.* 5, 213–230.
- Pergent-Martini, C., Boudouresque, C.F., Pasqualini, V., Pergent, G., 2006. Impact of fish farming facilities on *Posidonia oceanica* meadows: a review. *Mar. Ecol.* 27, 310–319.
- Personnic, S., Boudouresque, C.F., Astruch, P., Ballesteros, E., Blouet, S., Bellan-Santini, D., Bonhomme, P., Thibault-Botha, D., Feunteun, E., Harmelin-Vivien, M., Pergent, G., Pergent-Martini, C., Pastor, J., Poggiale, J.C., Renaud, F., Thibaut, T., Ruitton, S., 2014. An ecosystem-based approach to assess the status of a mediterranean ecosystem, the *Posidonia oceanica* seagrass meadow. *PLoS One* 9, e98994.
- Richir, J., Abadie, A., Binard, M., Biondo, R., Borges, A., Cimiterra, N., Collignon, A., Champenois, W., Donnay, A., Fréjefond, C., Gobert, S., Goffart, A., Lepoint, G., Pelaprat, C., Pere, A., Sirjacobs, D., Thomé, J.P., Volpon, A., Lejeune, P., 2015. STARE-CAPMED – Rapport d'activité 2014. STARESO, Calvi, France.
- Romero, J., Lee, K.-S., Pérez, M., Mateo, M.A., Alcoverro, T., 2006. Nutrient dynamics in seagrass ecosystems. In: Larkum, A.W.D., Orth, R.J., Duarte, C.M. (Eds.), *Seagrasses: Biology, Ecology and Conservation*, Book 1. Springer.
- Romero, J., Martinez-Crego, B., Alcoverro, T., Perez, M., 2007. A multivariate index based on the seagrass *Posidonia oceanica* (POMI) to assess ecological status of coastal waters under the water framework directive (WFD). *Mar. Pollut. Bull.* 55, 196–204.
- Ruiz, J.M., Boudouresque, C.F., Enríquez, S., 2009. Mediterranean seagrasses. *Bot. Mar.* 52, 369–381.
- Short, F., Carruthers, T., Dennison, W., Waycott, M., 2007. Global seagrass distribution and diversity: a bioregional model. *J. Exp. Mar. Biol. Ecol.* 350, 3–20.
- Strickland, J.D.H., Parsons, T.R., 1972. *A Practical Handbook of Seawater Analysis*. Fisheries Research Board of Canada, p. 328.
- UNEP-MAP-RAC/SPA, 2011. Draft guidelines for the standardization of mapping and monitoring methods of marine magnoliophyta in the Mediterranean. Working Document, Prepared by C Pergent-Martini for the Tenth Meeting of Focal Points for SPAs. Book UNEP(DEPI)/MED WG 359/9. RAC/SPA Publ., Marseille, France.
- Vassallo, P., Paoli, C., Rovere, A., Montefalcone, M., Morri, C., Bianchi, C.N., 2013. The value of the seagrass *Posidonia oceanica*: a natural capital assessment. *Mar. Pollut. Bull.* 75, 157–167.
- Winkler, L.K.W., 1888. Die Bestimmung des in Wasser gelösten Sauerstoffs. *Ber. Deut. Chem. Ges.* 21, 2843–2855.